

# OGF™

## Organic filter system



### About

The OGF system is an advanced organic wastewater treatment solution designed to filter and clarify effluent from LFC biodigesters and other upstream processes.

It accepts influent with typical total suspended solids (TSS) and biochemical oxygen demand (BOD) up to 1,500 ppm, and operates fully automatically without the need for continuous supervision. Routine operator involvement is minimal, limited to periodic replenishment of consumable items and removal of dewatered sludge.

The system integrates a complete treatment process, including clarification, filtration, and oxidation, combined with intelligent control and monitoring. A color touch screen provides intuitive control of all operating parameters. Connection to the OGF Cloud provides remote access, data logging, and automatic notifications for alarms and events.

### Benefits

- Reduces surcharge costs for discharge of water with high organic content
- Reduces costs to supply clean water for LFC biodigesters and other processes
- Produces clean, compliant effluent suitable for discharge or reuse
- Reduces labor with fully automatic, unattended operation
- Minimizes operating costs with efficient chemical and energy use
- Adapts to varying wastewater conditions for consistent performance without operator intervention
- Eliminates odor issues through controlled aerobic treatment
- Provides full visibility with remote monitoring and cloud reporting
- Improves reliability with closed-loop process control and automation



### Features

- Treats water with high organic concentrations
- Multi-stage treatment: clarification, coagulation, flocculation, filtration, and advanced oxidation
- Handles influent with BOD and TSS up to 1,500 ppm
- Configurable process parameters include settling time, dosing rates, and control limits
- Integrated microfiltration and nanofiltration for high quality effluent
- Online sensors for continuous measurement of temperature, TSS, turbidity, pH, and flow
- Closed loop control system for automatic optimization of the process
- Connects to the OGF Cloud for remote monitoring and control
- OGF Cloud records performance data and system diagnostics
- Automatic e-mail notifications for alarms and events from OGF Cloud
- Fixed film media for high treatment efficiency in a compact footprint
- Continuous aeration to maintain aerobic conditions and prevent odors

## Output water qualities

The OGF treatment system is available with three different effluent grades:

	TSS (ppm)	BOD (ppm)	Turbidity (NTU)	pH	Application
1	250	250	-	7	Sewage compliance
2	50	50	-	7	Irrigation and reuse in LFC biodigesters
3	5	5	5	7	High quality industrial water

### Maximum capacity per day

2900 litre (765 gallon)

### Construction

Stainless steel chassis and side panels. Chassis is mirror finish (EN 10088-2 specification 2P)

### Operating environment

Indoors or covered patio  
Must not be exposed to rain, snow, or sunshine

### Ingress protection

IP54 – splash proof and dust proof

### Operating altitude

0~3000 m (9800 ft)

### Ambient operating temperature

10°C~40°C (50°F~104°F) when altitude is less than 1000 m (3300 ft); reduce linearly to 24°C (75°F) at 3000 m

### Floor surface flatness required

±3 mm (0.1")

### Weight when empty

850 kg (1880 lb)

### Moving and positioning

Machine is rolled into place with casters which are then locked in position.

### Weight when full

1300 kg (2870 lb) maximum

### Space required around machine

**Left side:** 20 cm (8") minimum, 50 cm (20") preferred. 100 cm (39") is required for servicing

**Right side:** 15 cm (6") minimum, 60 cm (24") preferred. 100 cm (39") is required for servicing

**Back:** 2 cm (1"). 100 cm (39") is required for servicing

**Front:** 60 cm (24") minimum

### AC supply (order one type)

120 V: 105 V ~ 130 V, 50 Hz ~ 60 Hz

230 V: 207 V ~ 253 V, 50 Hz ~ 60 Hz

External circuit breaker required: 15 A

### Maximum power

1.5 kW

### Electrical energy per day

30 kWh typical

### Heat generated by process

200 W ~ 800 W, 400 W typical

### User interface

15" touchscreen with 65k colors

### Ethernet

RJ45, 100 baseT

DHCP or fixed IP address

Connect to Internet with direct cable, Wi-Fi client, or GSM modem

Automatically connects to OGF

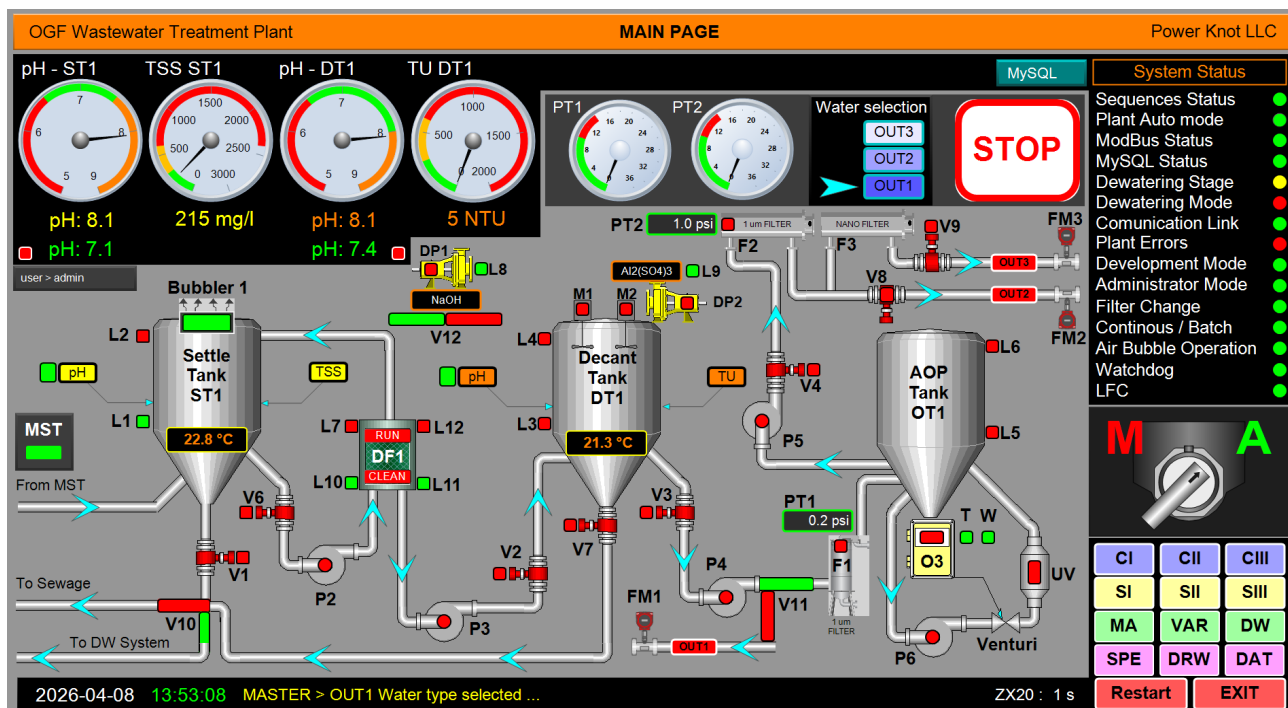
Cloud for remote support, reporting, and monitoring (included in purchase price)

### Operating lifetime

Expected to be 10 to 15 years

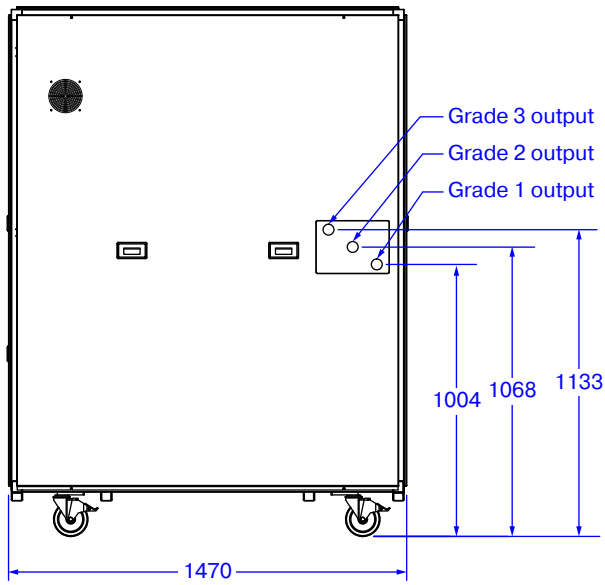
### Warranty

1 year on all parts and components

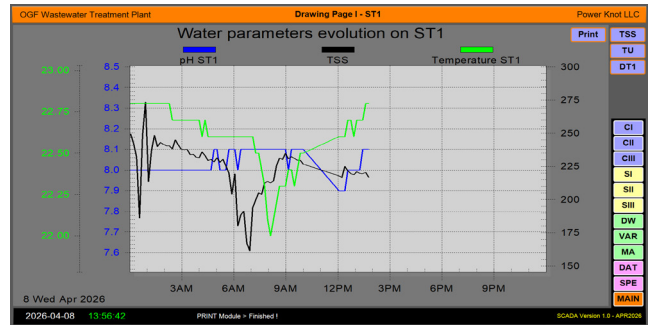


# OGF

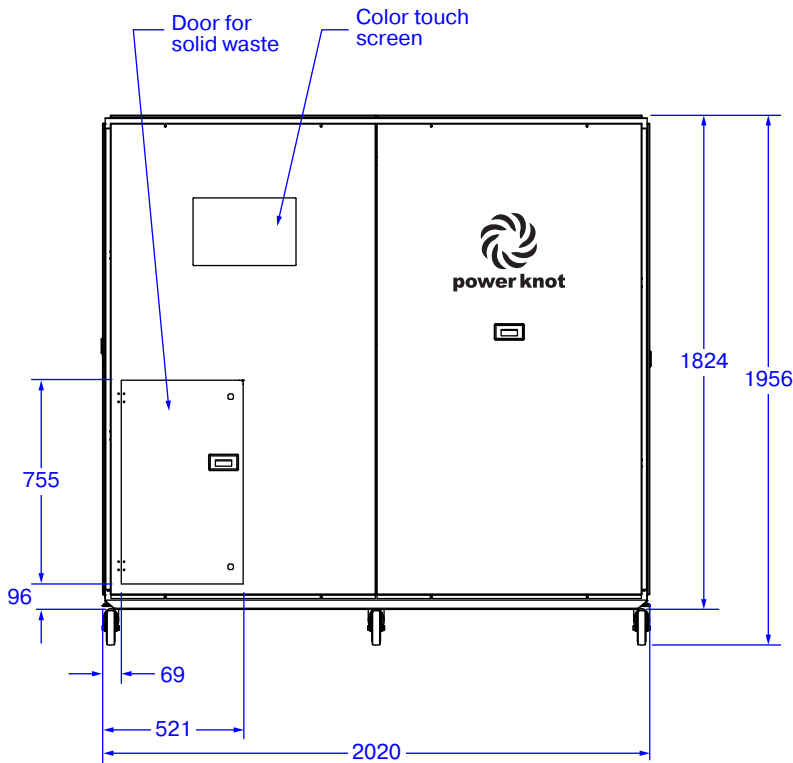
Dimensions in mm ±2 mm



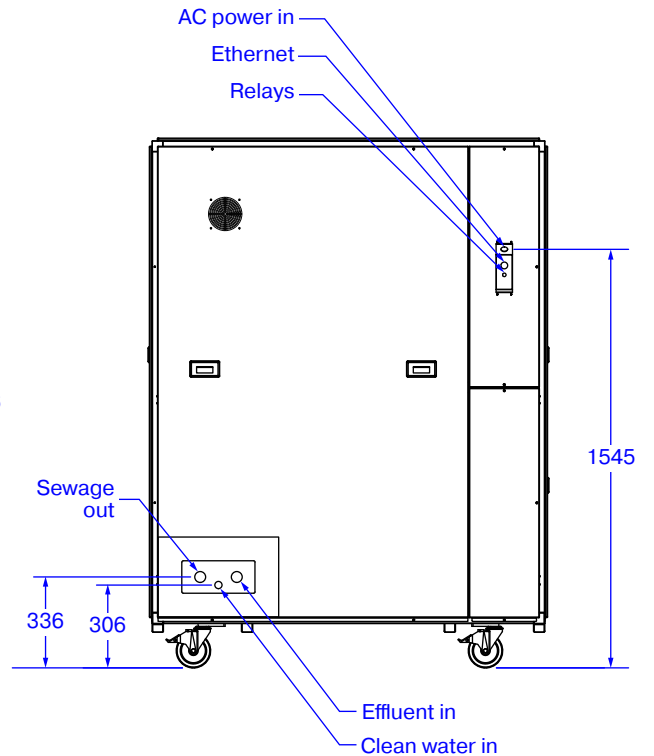
**Right**



**Example screenshot**



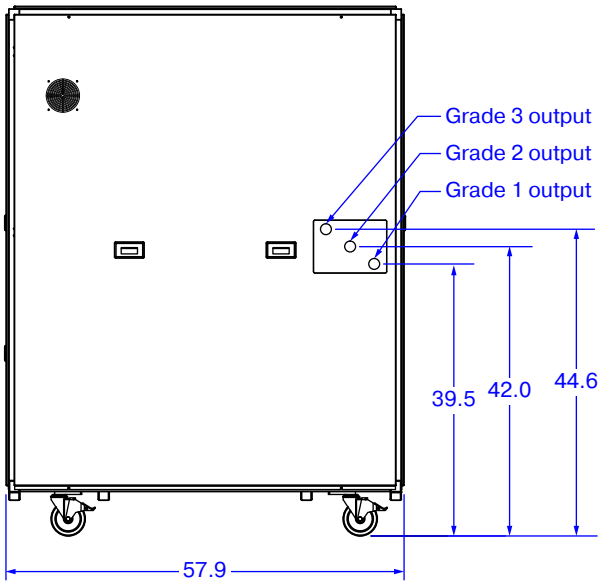
**Front**



**Left**

# OGF

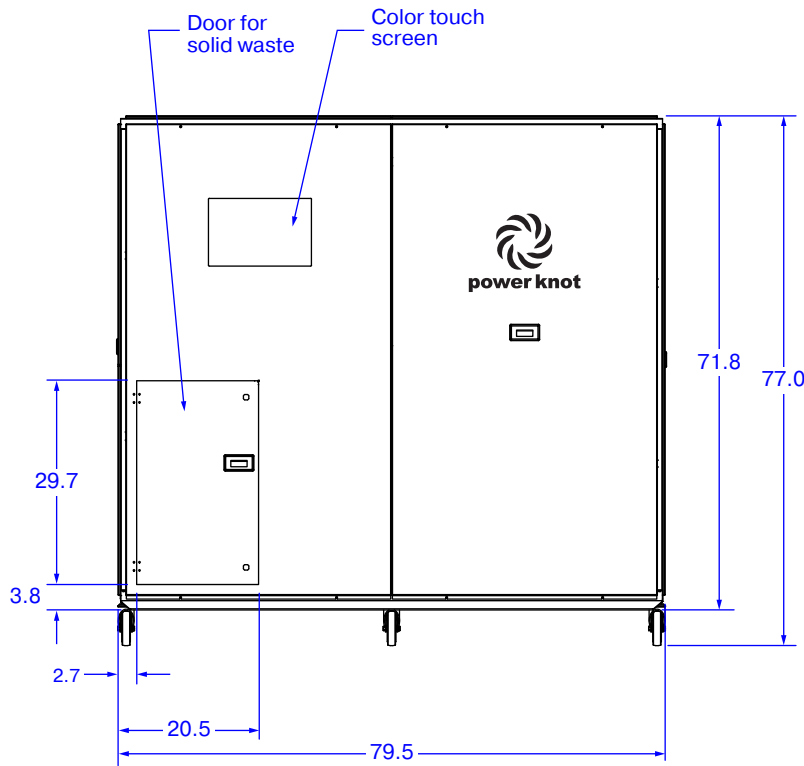
Dimensions in inches ±0.1"  
(derived from mm)



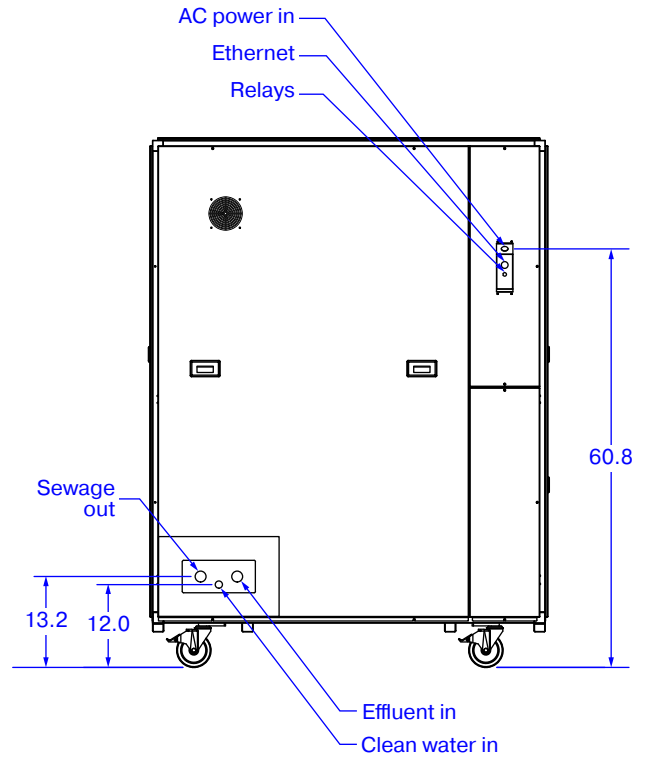
**Right**



**Example screenshot**



**Front**



**Left**



Power Knot LLC | 47613 Warm Springs Blvd | Fremont, CA 94539 USA | +1-408-889-8433 | info@powerknot.com | www.powerknot.com

Power Knot, the Power Knot logo, the Power Knot mark, LCD, LFC, and OGF are trademarks or registered trademarks of Power Knot LLC. All other trademarks used herein are the property of their respective owners. Copyright © 2025–2026 Power Knot LLC; all rights are reserved. Specifications are subject to change at any time without notice. Document number 96-01359-03, 09 April 2026